

FLUIDCHEM VALVES (I) Pvt. Ltd.

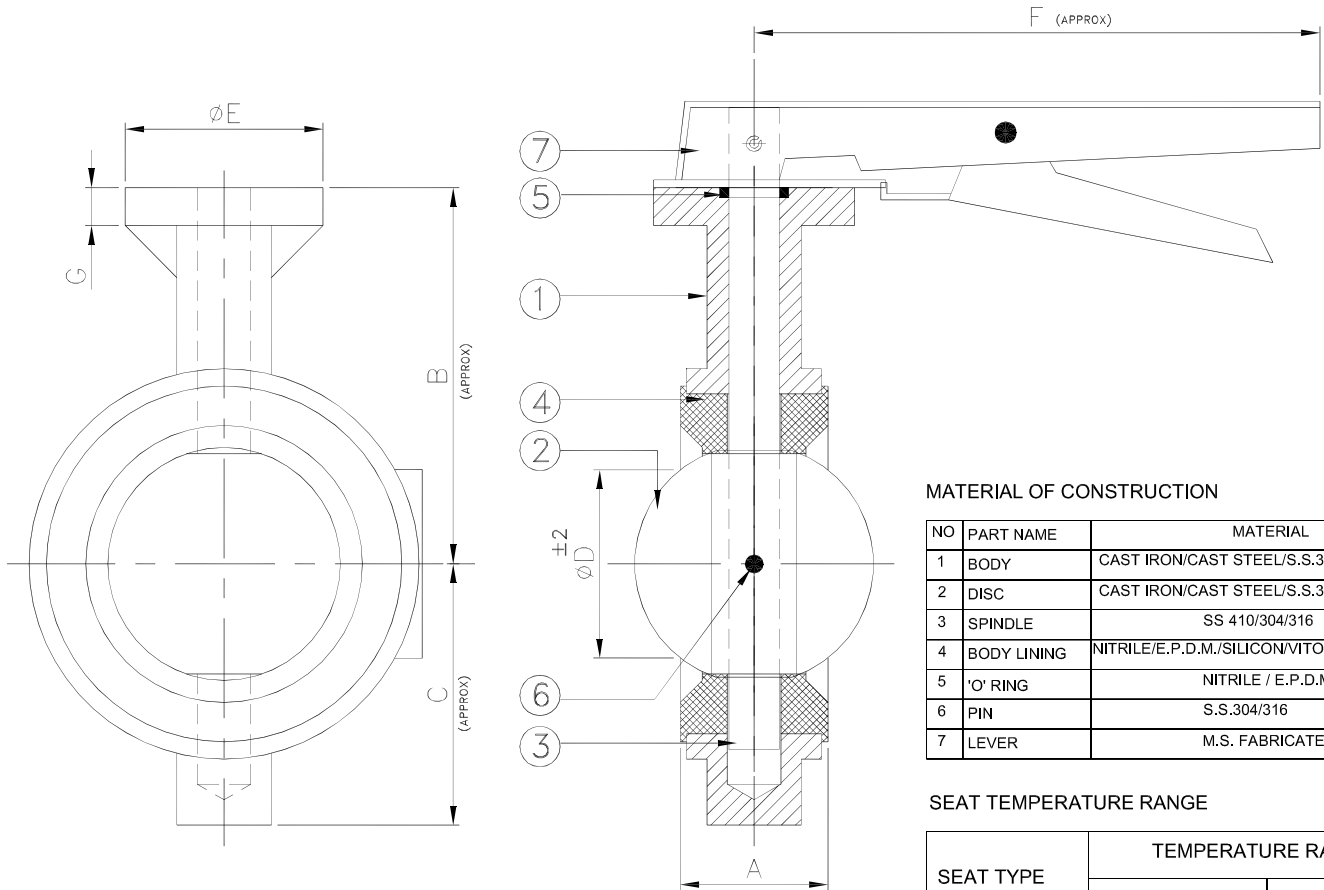
ISO 9001-2008 COMPANY

2&3 Manish Indl.Estate No.1, Navghar, vasai (East), Dist. Thane-401210,
Maharashtra India. Phone:0250-2390012, Telefax:0250-2391053 ,
E-mail :fluidchem@mtnl.net.in / fluidchem.valves@gmail.com

| | | |
|--------------|--------------------|--|
| DRN NIZAM | DATE 27/07/2013 | |
|--------------|--------------------|--|

WAFER TYPE BUTTER FLY VALVE.

DRG. NO :FVIL/BFV-WAFER/40-65



NOTE : ALL DIMENSION ARE IN MM.

MATERIAL OF CONSTRUCTION

| NO | PART NAME | MATERIAL |
|----|-------------|--|
| 1 | BODY | CAST IRON/CAST STEEL/S.S.304-316 |
| 2 | DISC | CAST IRON/CAST STEEL/S.S.304-316 |
| 3 | SPINDLE | SS 410/304/316 |
| 4 | BODY LINING | NITRILE/E.P.D.M./SILICON/VITON/HYPALON |
| 5 | 'O' RING | NITRILE / E.P.D.M. |
| 6 | PIN | S.S.304/316 |
| 7 | LEVER | M.S. FABRICATED |

SEAT TEMPERATURE RANGE

| SEAT TYPE | TEMPERATURE RANGE | |
|-----------|-------------------|--------------|
| | Mln. | Max. |
| NITRILE | -13°F(-25°C) | 212°F(100°C) |
| EPDM | -13°F(-25°C) | 250°F(120°C) |
| SILICON | -58°F(-50°C) | 356°F(180°C) |
| VITON | -23°F(-5°C) | 392°F(200°C) |
| HYPALON | -4°F(-20°C) | 250°F(120°C) |

TESTING

| PRESSURE RATING | HYDROSTATIC SHELL TEST | | HYDROSTATIC SEAT TEST | |
|-----------------|------------------------|-----|-----------------------|-----|
| | Kg/CM2 | PSI | Kg/CM2 | PSI |
| PN16 | 22 | 310 | 16 | 225 |
| PN10 | 15 | 210 | 10 | 140 |

| SIZE | | A | B | C | D | E | F | G | FLANGE MOUNTING (I.S.O 5211) |
|------|------|----|-----|----|----|----|-----|----|------------------------------|
| MM | INCH | | | | | | | | |
| 40 | 1½" | 36 | 92 | 52 | 20 | 65 | 180 | 15 | F05 |
| 50 | 2 | 43 | 103 | 70 | 28 | 65 | 180 | 15 | F05 |
| 65 | 2½" | 46 | 110 | 76 | 48 | 65 | 180 | 15 | F05 |

CONFORMITY TO CODES & STANDARDS

- 1) GENERAL DESIGN & MANUFACTURE :- BS 5155 / API 609 / EN 593 / IS 13095
- 2) VALVE FACE TO FACE DIMENSION :- BS 5155 / ISO 5752 / API 609
- 3) TOP FLANGE DRILLING :- ISO 5211
- 4) VALVE INSPECTION & TESTING :- BS 6755 Part - I / API 598 / EN 12266-1
- 5) FLANGE STANDARD CONFORMITY :- ANSI 150 / ANSI 125 / BS 10 TAB D & E
IS 6392 NP 0.6 / 1.0 / 1.6

THIS DRAWING IS PROPERTY OF FLUIDCHEM VALVES (I) PVT. LTD.

FLUIDCHEM VALVES (I) PVT. LTD. RESERVES RIGHTS OF USE, CHANGE & MODIFY PRODUCT DESIGN OR PRODUCT WITHOUT PRIOR NOTICE.

CHECKED BY :-

APPROVED :-