

FLUIDCHEM VALVES (I) Pvt. Ltd.

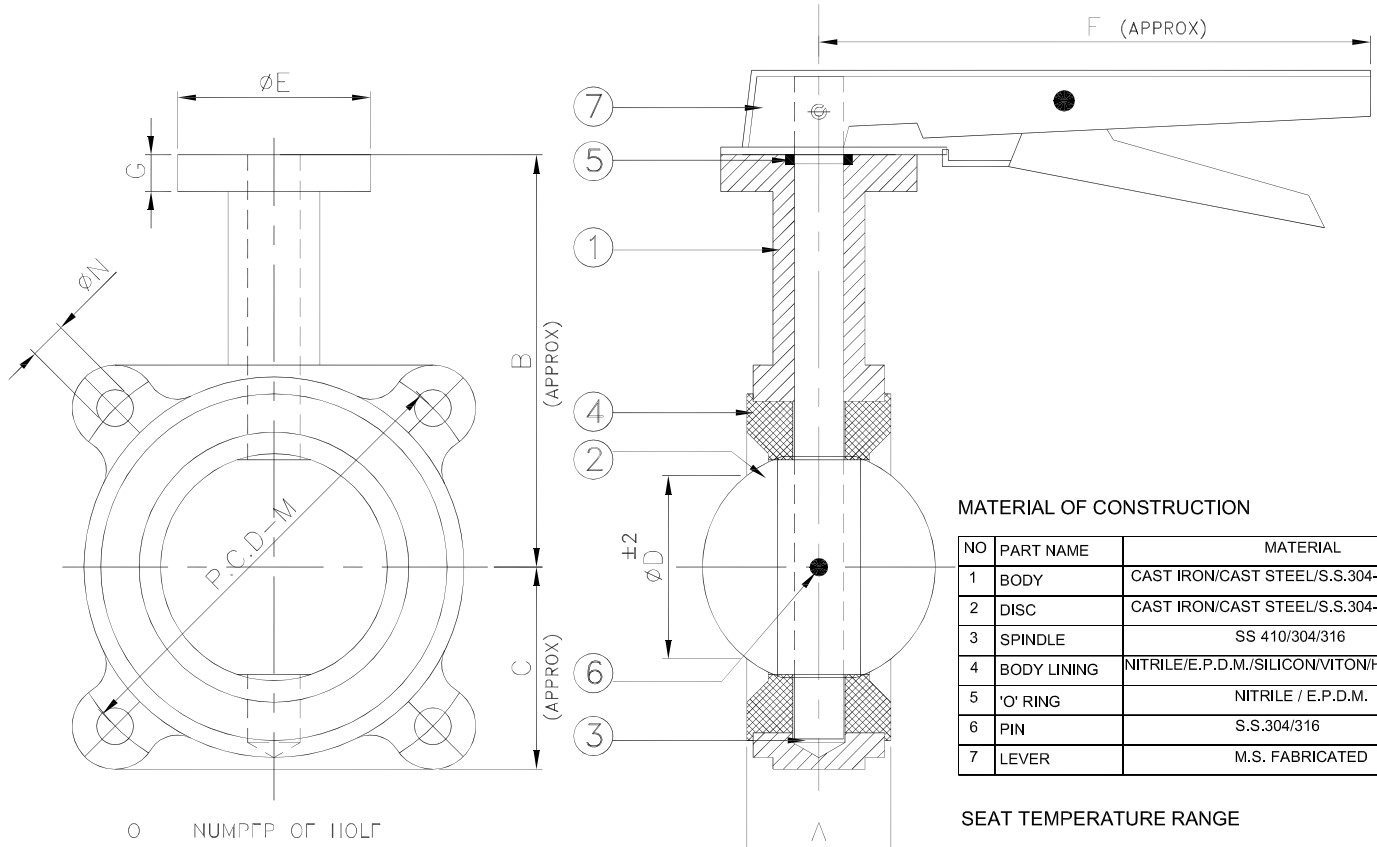
ISO 9001-2008 COMPANY

2&3 Manish Indl.Estate No.1, Navghar, vasai (East), Dist. Thane-401210, Maharashtra India. Phone:0250-2390012, Telefax:0250-2391053 , E-mail :fluidchem@mtnl.net.in / fluidchem.valves@gmail.com

DRN NIZAM	DATE 27/07/2013	
--------------	--------------------	--

LUG TYP BUTTER FLY VALVE.

DRG. NO :FVIL/BFV-LUG/40-80



MATERIAL OF CONSTRUCTION

NO	PART NAME	MATERIAL
1	BODY	CAST IRON/CAST STEEL/S.S.304-316
2	DISC	CAST IRON/CAST STEEL/S.S.304-316
3	SPINDLE	SS 410/304/316
4	BODY LINING	NITRILE/E.P.D.M./SILICON/VITON/HYPALON
5	'O' RING	NITRILE / E.P.D.M.
6	PIN	S.S.304/316
7	LEVER	M.S. FABRICATED

SEAT TEMPERATURE RANGE

SEAT TYPE	TEMPERATURE RANGE	
	MIn.	Max.
NITRILE	-13°F(-25°C)	212°F(100°C)
EPDM	-13°F(-25°C)	250°F(120°C)
SILICON	-58°F(-50°C)	356°F(180°C)
VITON	-23°F(-5°C)	392°F(200°C)
HYPALON	-4°F(-20°C)	250°F(120°C)

TESTING

PRESSURE RATING	HYDROSTATIC SHELL TEST		HYDROSTATIC SEAT TEST	
	Kg/CM2	PSI	Kg/CM2	PSI
PN16	22	310	16	225
PN10	15	210	10	140

NOTE:-M,N,O AS PER REQUIREMENT

M = _____
 N = _____
 O = _____

NOTE : ALL DIMENSION ARE IN MM.

SIZE		A		B	C	D	E	F	G	FLANGE MOUNTING (I.S.O 5211)
MM	INCH	FACE TO FACE	FACE TO FACE							
40	1½"	36	-	112	52	20	65	180	15	F05
50	2"	43	-	118	65	28	65	180	15	F05
65	2½"	46	-	125	68	48	65	180	15	F05
80	3"	46	48	134	76	67	65	215	15	F05

CONFORMITY TO CODES & STANDARDS

- GENERAL DESIGN & MANUFACTURE :- BS 5155 / API 609 / EN 593 / IS 13095
- VALVE FACE TO FACE DIMENSION :- BS 5155 / ISO 5752 / API 609
- TOP FLANGE DRILLING :- ISO 5211
- VALVE INSPECTION & TESTING :- BS 6755 Part - I / API 598 / EN 12266-1
- FLANGE STANDARD CONFORMITY :- ANSI 150 / ANSI 125 / BS 10 TAB D & E
IS 6392 NP 0.6 / 1.0 / 1.6

THIS DRAWING IS PROPERTY OF FLUIDCHEM VALVES (I) PVT. LTD.

FLUIDCHEM VALVES (I) PVT. LTD. RESERVES RIGHTS OF USE, CHANGE & MODIFY PRODUCT DESIGN OR PRODUCT WITHOUT PRIOR NOTICE.

CHECKED BY :- _____ APPROVED :- _____