



# FLUIDCHEM VALVES ( I ) Pvt. Ltd.

# BALL VALVE - SCREW END

### TECHNICAL DATA

DESIGN & MANUFACTURING STD.: BS 5351, API 602

TESTING & INSPECTION STD.: API 598/BS 5146/BS 6755 PART - 1

FACE TO FACE: AS PER ANSI B 16.10

END CONNECTIONS: BSP, BSPT, NPT

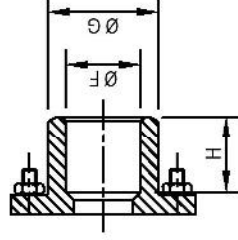
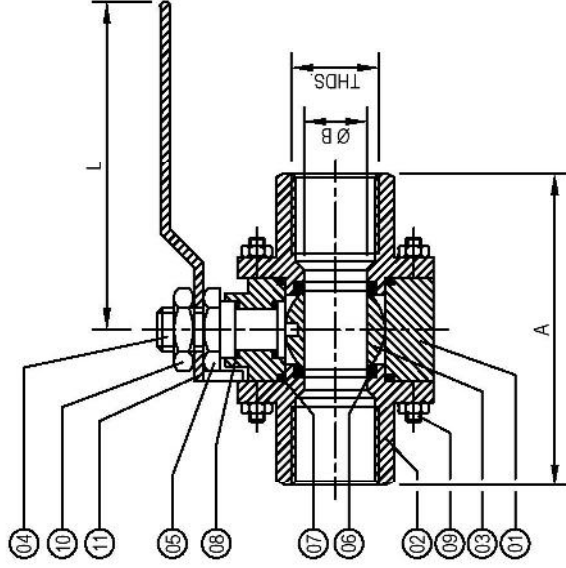
SOCKET WELD

SOCKET WELD & THREADED TO: ANSI B 16.11/ ANSI B 2.1

### THREE PIECE BALL VALVE SCREW END

ALL DIMENSIONS ARE IN M.M

CLASS	PRIMARY SERVICE RATING & TEST PRESSURE	
	WORKING PRESSURE	HYD. TEST PRESSURE
150	150 PSIG	425 PSIG
300	300 PSIG	1100 PSIG
800	800 PSIG	3000 PSIG
AIR TEST - SEAT		102 PSIG



SOCKET WELD END

NO.	DESCRIPTION	MATERIAL	QTY.
01	BODY	ASTM A 216 Gr. WCB	1
		C.I. TO S 210 Gr. FG 220	
		AISI 304 OR CF8 (I.C.)	
		AISI 316 OR CF8M (I.C.)	
		ASTM A 105	
02	BODY CONNECTOR	ASTM A 216 Gr. WCB	1
		C.I. TO IS 210 Gr. FG 220	
		AISI 304 OR CF8 (I.C.)	
		AISI 316 OR CF8M (I.C.)	
		ASTM A 105	
03	BALL	AISI 304 / AISI 316	1
04	STEM	AISI 304 / AISI 316	1
05	GLAND NUT	AISI 304 / AISI 316	1
06	SEAT RING	PTFE OR FILLED PTFE	2
07	BODY SEALANT RING	PTFE OR FILLED PTFE	2
08	STEM SEAL	PTFE OR FILLED PTFE	2
09	STUD & NUT	C.S. / S.S.304 / S.S.316	4
10	LOCK NUT	AISI 304 / AISI 316	1
11	LEVER	C.S. / S.S.304 / S.S.316	1

ASA - 150						
SIZE NB	A	Ø B	L	BSP / BSPT NPT	Ø F	Ø G H
15	80	13	150	1/2"	21.8	29 12.7
20	85	19	150	3/4"	27.3	35 19.0
25	100	25	150	1"	34.1	43 22.0
32	110	32	160	1.1/4"	43.0	54 22.0
40	120	38	160	1.1/2"	49.0	58 22.0
50	130	50	160	2"	61.3	71 23.0

ASA - 800						
SIZE NB	A	Ø B	L	BSP / BSPT NPT	Ø F	Ø G H
15	68	12	115	1/2"	21.8	29 12.7
20	79	16	122	3/4"	27.3	35 19.0
25	95	18	153	1"	34.1	43 22.0
32	107	24	178	1.1/4"	43.0	54 22.0
40	117	32	178	1.1/2"	49.0	58 22.0
50	130	37	178	2"	61.3	71 23.0



## FLUIDCHEM VALVES ( I ) Pvt. Ltd.

ISO 9001-2008 COMPANY

2&3 Manish Indl.Estate No.1, Nayghar, Vasai (East), Dist. Thane-401210, Maharashtra, India. Phone:0250-2390012, Telefax:0250-2391053, E-mail :fluidchem.valves@gmail.com/fluidchem@mtnl.net.in



DRN NIZAM  
DATE 27/02/2013

### THREE PIECE BALL VALVE S/E

CLASS - 150/800

THIS DRAWING IS PROPERTY OF FLUIDCHEM VALVES (I) PVT. LTD.

FLUIDCHEM VALVES (I) PVT. LTD. RESERVES RIGHTS OF USE, CHANGE & MODIFY PRODUCT DESIGN OR PRODUCT WITHOUT PRIOR NOTICE.

CHECKED BY :- NAVED HAVA - HEAD - Q.A

APPROVED BY :- NAJEEB HAVA - DIRECTOR